

Intermezzo č. 2.

~ Sladké mlyny klepocí ~

① Grazioso

S 1. 2.

A. 1. 2.

T. 1. 2.

B. 1. 2.

p pa pa pa pa (simile)

p pa pa pa pa (simile)

p a

p b a

S. 1. 2.

A. 1. 2.

T. 1. 2.

B. 1. 2.

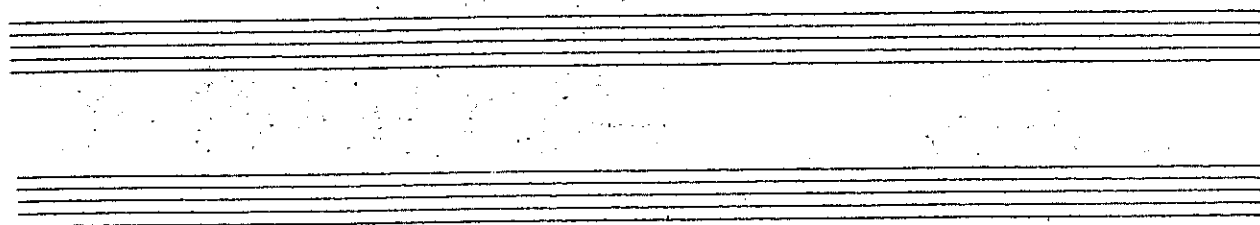
Sladké mlyny klepocí sladké mlyny

a

a

-B-

sladké mlyny klepo-ců. sla-dké mly-ny



②

slad - ké mly - ny

S. 1. *slad - ké*

1. *slad ké*

A. 2. *slad ké*

T. 1. 2. *slad ké*

B. 1. 2. *slad ké*

3 3

S. 1. *unis.*

1. *unis.*

A. 2. *unis.*

T. 1. 2. *unis.*

B. 1. 2. *unis.*

Tie mlyny klepo-ciu klepociu

Soprano (S) staff: Treble clef, G-clef, 4/4 time signature. The melody consists of eighth and quarter notes.

Alto (A) staff: Treble clef, G-clef, 4/4 time signature. The melody consists of eighth and quarter notes.

Tenor (T) staff: Treble clef, G-clef, 4/4 time signature. The melody consists of quarter notes.

Bass (B) staff: Bass clef, F-clef, 4/4 time signature. The melody consists of quarter notes.

tie mlyny klepo-cú kle - po - cú

④

Soprano (S) staff: Treble clef, G-clef, 4/4 time signature. The melody consists of eighth and quarter notes.

Alto (A) staff: Treble clef, G-clef, 4/4 time signature. The melody consists of eighth and quarter notes.

Tenor (T) staff: Treble clef, G-clef, 4/4 time signature. The melody consists of quarter notes.

Bass (B) staff: Bass clef, F-clef, 4/4 time signature. The melody consists of quarter notes.

Tie mlyny klepo-cú klepo-cú ———

Soprano: *S*¹
Alto: *A.*
Tenor: *T.*¹
Bass: *B.*¹
Lyrics: tie mlyny klepo-cú kle-po - cú

Soprano: *S*¹
Alto: *A.*
Tenor: *T.*¹
Bass: *B.*¹
Lyrics: sladké mlyny klepo-cú kle-po - cú a

S¹ | *slad-ké mly-ny sladké mlyny klepo-cú*

A 1

A 2

T¹

3¹

S¹ | *slad-ké mly-ny slad - ké*

A 1

A 2

T¹

3¹

S. 1. 2. mly - ry slad - kē

A. 1. 2.

T. 1. 2.

B. 1. 2.

Coda

S. 1. 2.

A. 1. 2.

T. 1. 2.

B. 1. 2.